

Downstream Authority of the Quapaw Tribe of Oklahoma Regular Meeting
July 7, 2012

Meeting Called to Order: 12 pm

ROLL CALL:	John Berrey, Chairman	Present
	Larry Ramsey, Secretary	Present
	Ranny McWatters, Treasurer	Present
	Marilyn Rogers, Member	Present
	Tamara Smiley, Member	Present

DECLARATION OF QUORUM: announced by Larry Ramsey

Construction Update

- See attached
- 3 week look ahead schedule
- Lower level – sheet rock next week
 - Walls framed in
 - Rough in on – going
- Lobby level
 - Electricians/ plumbers finish this week
- Level 1/level 2
 - All framed out
 - All rough in complete by Wed next week
- Level 3
 - Framing
- Level 4
 - Laid out
 - Fireproofing
- First set of windows to be delivered tomorrow
 - Deliveries will continue weekly
- Proposed turn over dates:
 - Nov 3 – lower and lobby
 - Nov 9 – level 1/2
 - Nov 16 – level 3/4
 - Nov 30 – level 5/6
- October close registration desk to allow for new build
- Buffalo Grille available Nov 1

TV Locations

- 37" in all rooms currently
 - New ones to be same size
- 52" or larger in hospitality suites
- 52" in suite living rooms
- Still working on in-room TV options
 - Lodge Net

- Apple TV
 - Etc
 - Will have info for review next week
- Lobby lounge/lobby
 - Will be used for internal marketing

Signs

- Spa
- Grab – N – Go
- Buffalo Grille – use existing
- Lobby Bar
- Tribal Logo – outside of building
- Swoosh (2) – outside of building

Voice/Data

- Wireless internet in rooms
- Only one hard line phone in each room
- Two in suites

Spa Layout

- Mani/Pedi room
- Two options presented
 - Option 1
 - 2 mani/2 pedi/2 hair
 - Options 2
 - 2 mani/ 1 hair/ 2 pedi
- Consensus of the DDA to use option 1
- Men's /Women's Relaxation rooms
 - Lounge chair options presented
 - Mix of lounge and Chaise
 - TV's in men's but not in women's
 - Consensus of the DDA
 - Chairs
 - Recliner in men's
 - Only one chaise in women's
 - Water feature between lounges
 - "screen" options
 - Glass panels offered as option – swirls preferred
 - Accessories
 - No off the shelf lines, want to stay closer to what is currently used
 - Natural elements
 - More native American

Hardware

- Rooms
 - Brushed nickel in current tower – stay with current option

Stain

- Dark stain in suites
- Cherry in regular rooms
 - Consensus of the DDA to go w/ the dark stain in all areas.

High-Limits

- See attached
- Layout
 - Add entry into tables
 - Remove side entrance to lobby
- Discussion on finishes
 - Do not like wall panels that were presented
 - Want to match the current
- No host desk
- No door between
- New carpet
- Reconfigure bathroom for access from both sides

Trash for hotel

- Look at options for covered/neutralized compactors

Plugs w/USB

- Stay with 4 plex with regular plugs
- No USB plug - \$30 each

Benches in Showers

- Approx \$200 per shower, \$30,000 total
- Built in
- Consensus of the DDA to add

Hotel Furniture

- General discussion
- Tax issues with American Hotel \$50,000
- Released mock up drawings for samples, stopped process when tax issue arose
- Gone back to 2nd bidder, Harbor Hospitality, for review on bid and options
- Looking to go with Birch directly

Fitness Room

- Proposed plan to move to old children's room space
- Use store front windows on lobby wall

Pool

- Proposed plan of new pool bar

Donation

- \$5000
- Northern Cheyenne Boys & Girls Club
- Wild fires
- Consensus of the DDA

Adjourn 2:41 pm

Design Update

Prepared for:



Downstream Casino Resort Hotel Expansion

11 July, 2012

JCJ ARCHITECTURE

Boston
Hartford
New York
Phoenix
San Diego

JCJ.com

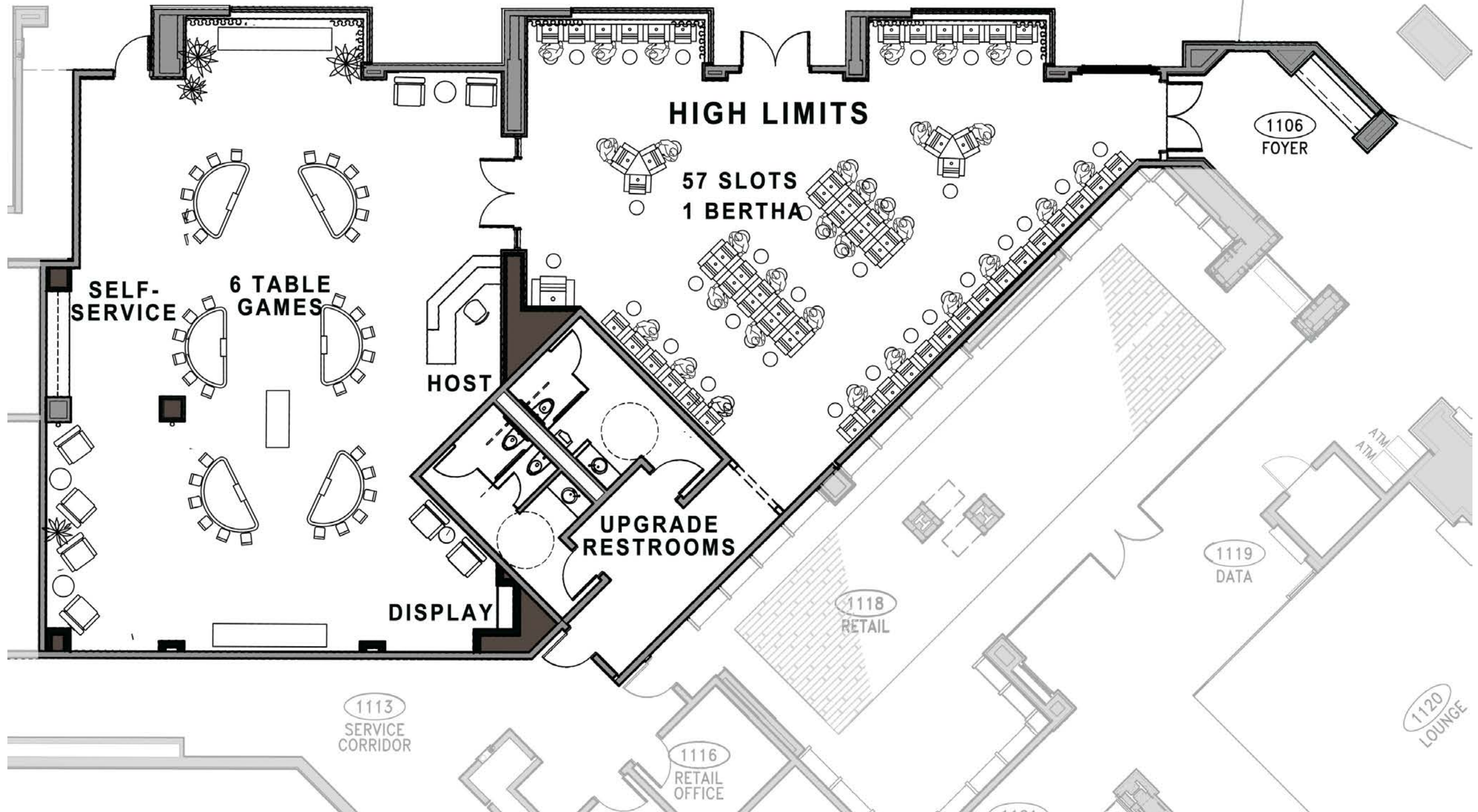
DESIGN AGENDA July 11, 2012

- HIGH LIMITS LAYOUT
- HIGH LIMITS MATERIALS & FINISHES - PRELIMINARY
- SPA FF&E





High Limits



HIGH LIMITS LAYOUT

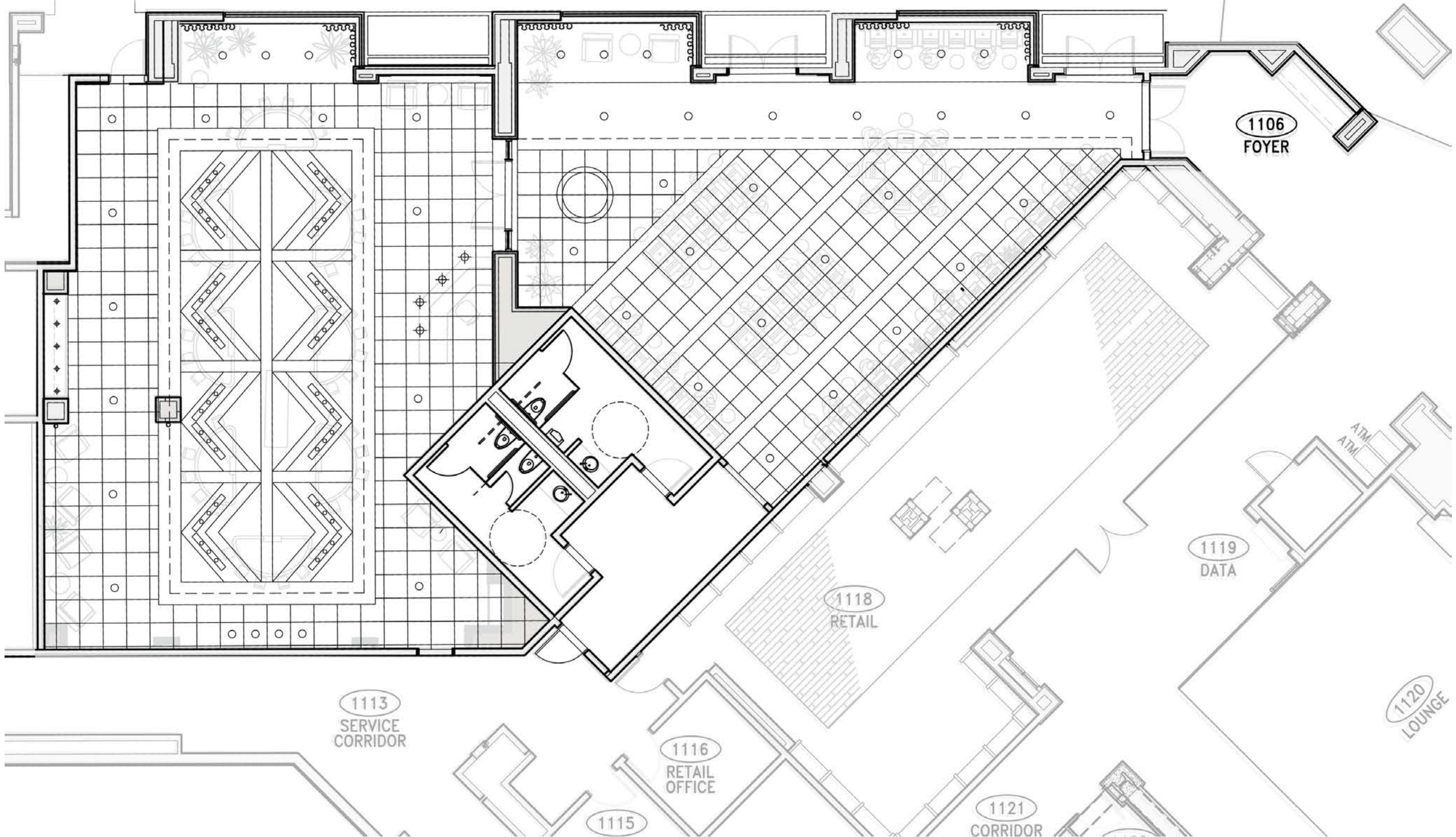
©JCI Architecture

July 11, 2012

JCI ARCHITECTURE

DOWNSTREAM
CASINO RESORT

DOWNSTREAM CASINO RESORT EXPANSION - Quapaw, Oklahoma

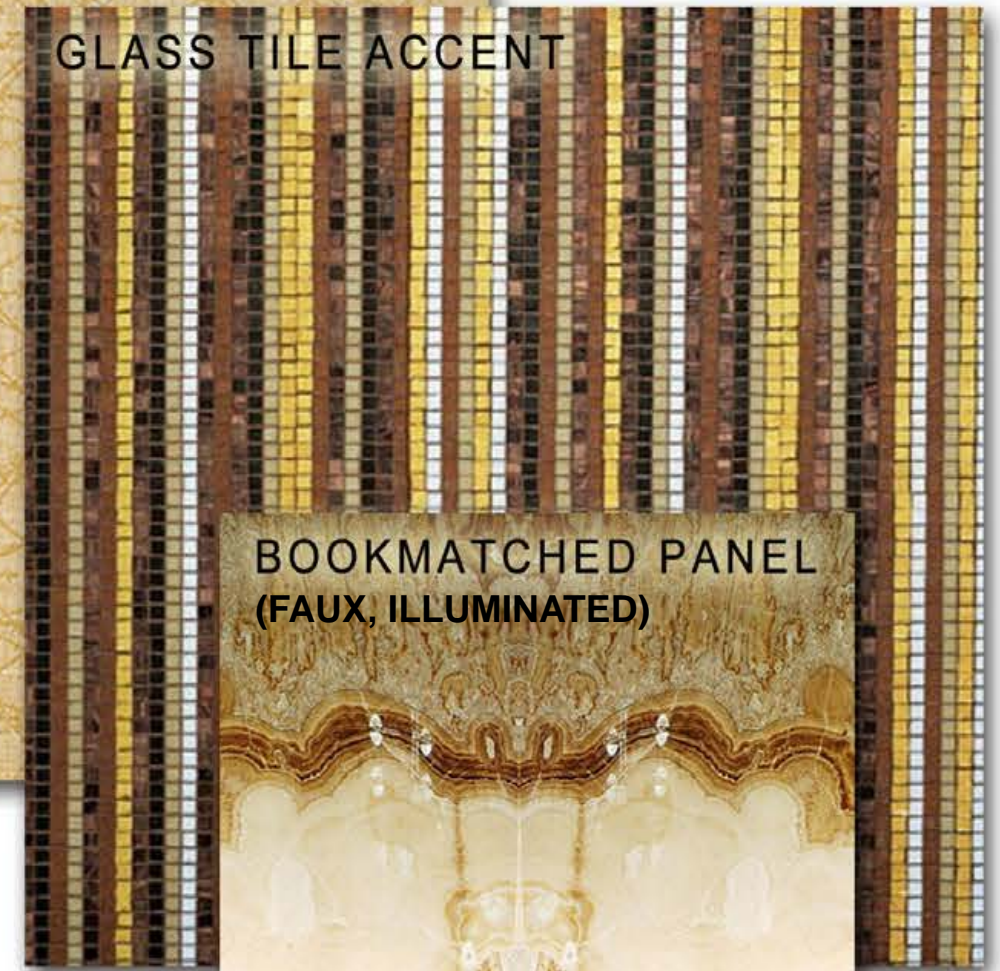
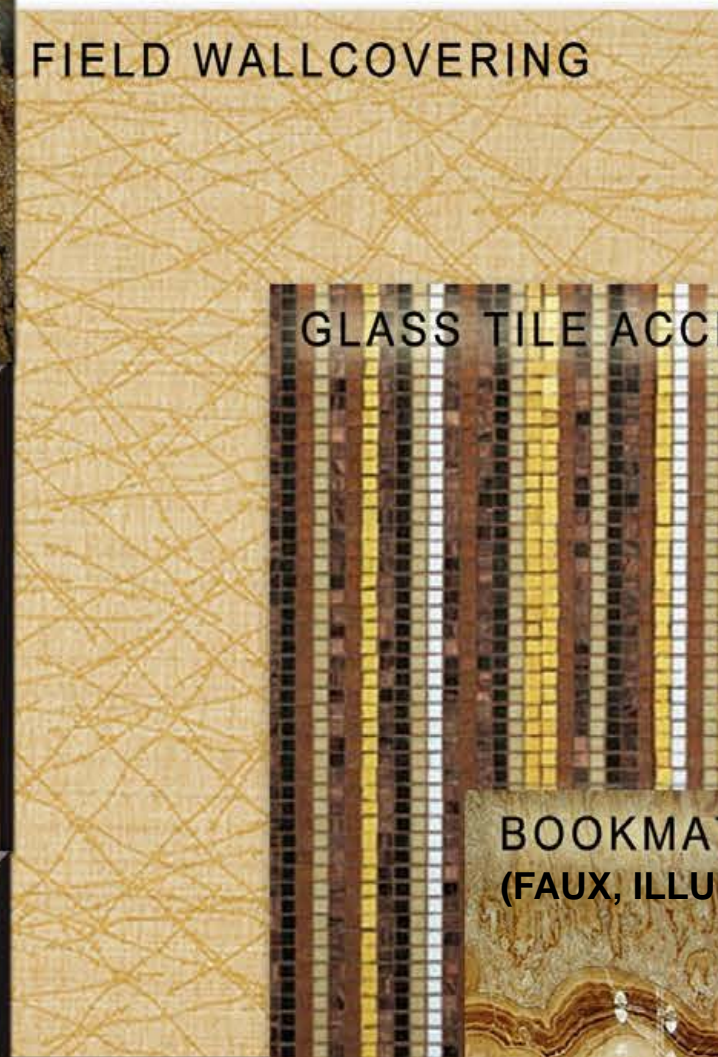


July 11, 2012

JCJ ARCHITECTURE

DOWNSTREAM
CASINO RESORT

HIGH LIMITS LAYOUT – REFLECTED CEILING PLAN
©JCJ Architecture
DOWNSTREAM CASINO RESORT EXPANSION - Quapaw, Oklahoma



HIGH LIMITS LAYOUT – PRELIMINARY MATERIALS & FINISHES

©JCI Architecture

July 11, 2012

JCI ARCHITECTURE

DOWNSTREAM
CASINO RESORT

DOWNSTREAM CASINO RESORT EXPANSION - Quapaw, Oklahoma



CONCEPT ELEVATION – BACK WALL



CONCEPT ELEVATION – SELF-SERVE WALL

HIGH LIMITS – TABLE GAMES ELEVATION CONCEPTS

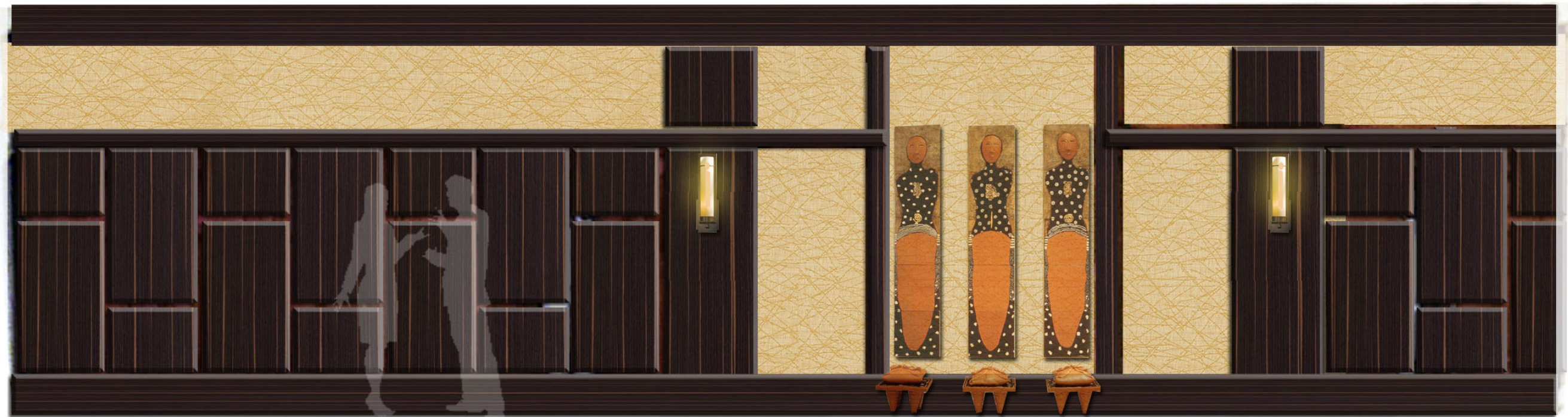
©JCI Architecture

July 11, 2012

JCI ARCHITECTURE

DOWNSTREAM
CASINO RESORT

DOWNSTREAM CASINO RESORT EXPANSION - Quapaw, Oklahoma



CONCEPT ELEVATION – BACK WALL ALTERNATE

HIGH LIMITS – TABLE GAMES ELEVATION CONCEPTS

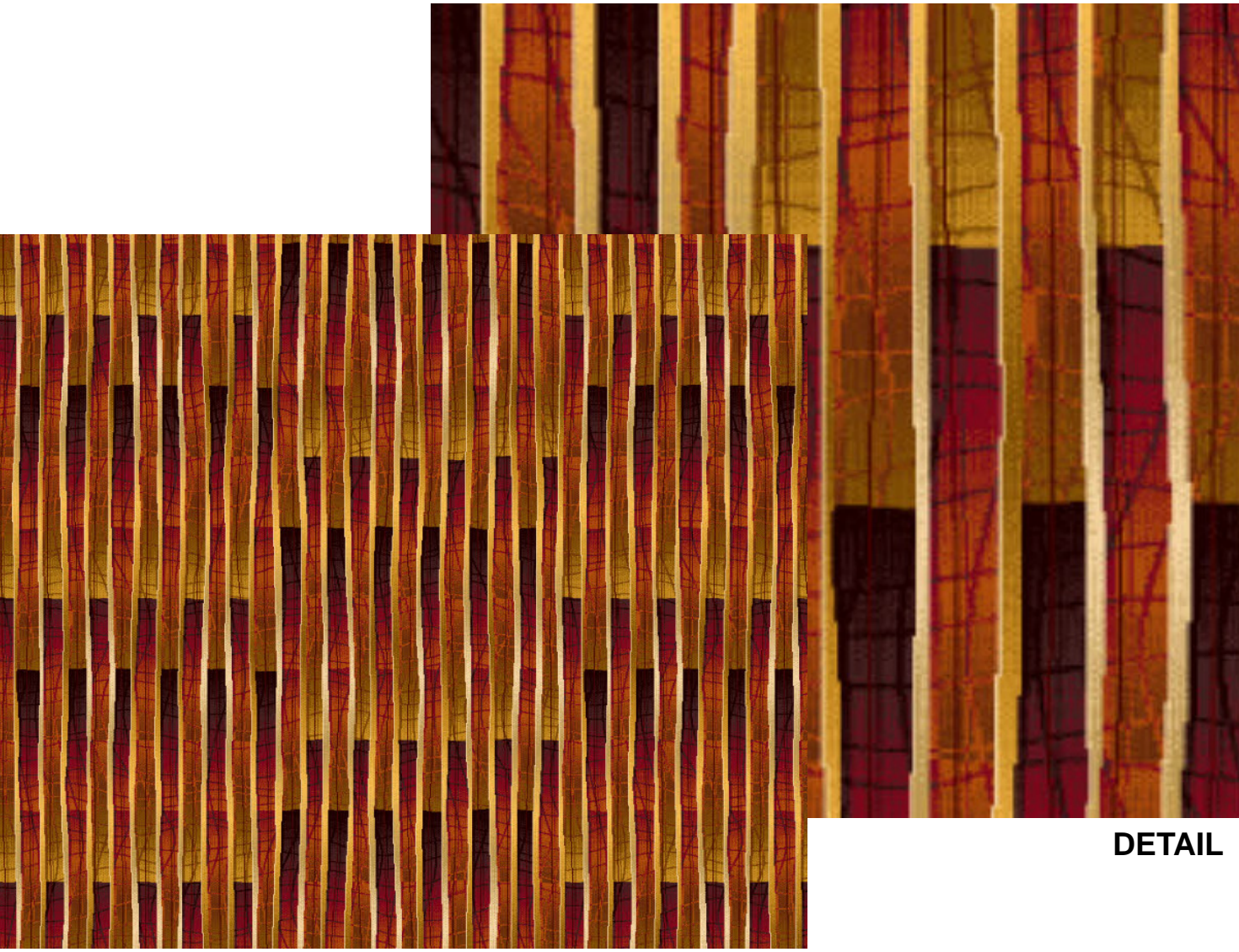
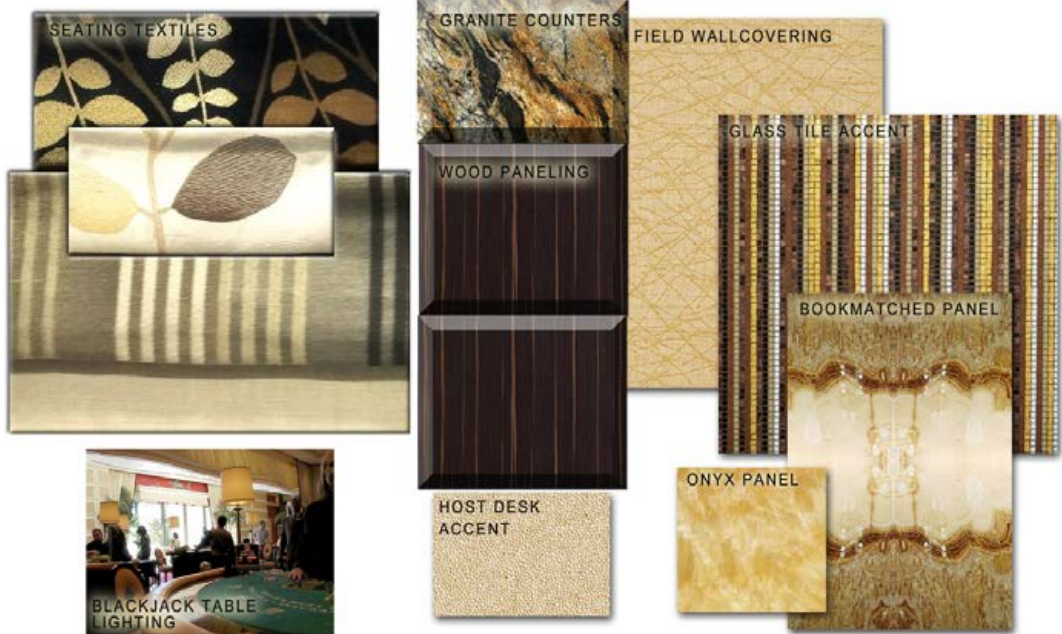
©JCI Architecture

July 11, 2012

JCI ARCHITECTURE

DOWNSTREAM
CASINO RESORT

DOWNSTREAM CASINO RESORT EXPANSION - Quapaw, Oklahoma



DETAIL

OPTION 1A



DETAIL

OPTION 1B

HIGH LIMITS – PRELIMINARY CARPET OPTIONS

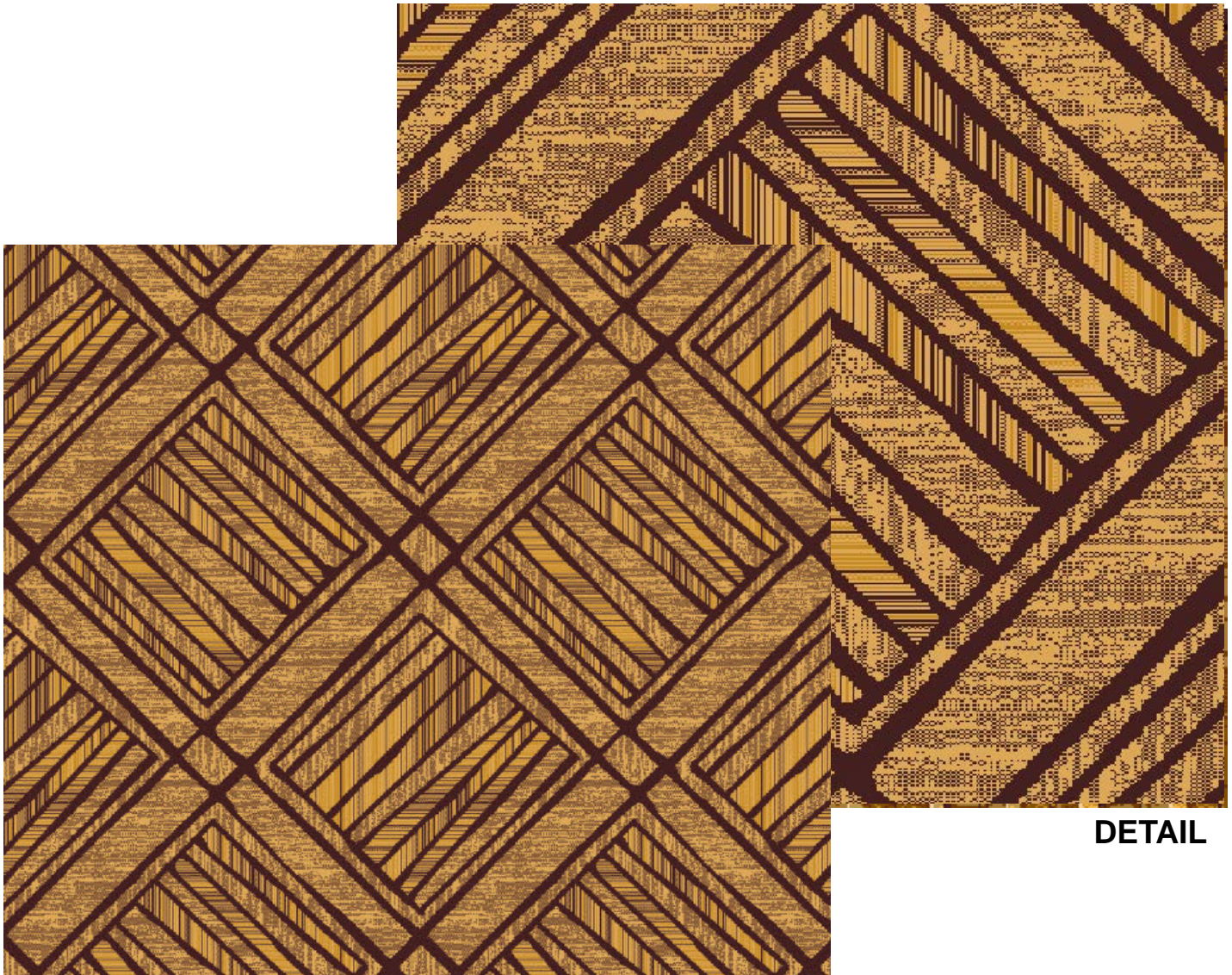
©JCY Architecture

July 11, 2012



DETAIL

OPTION 2A



DETAIL

OPTION 2B

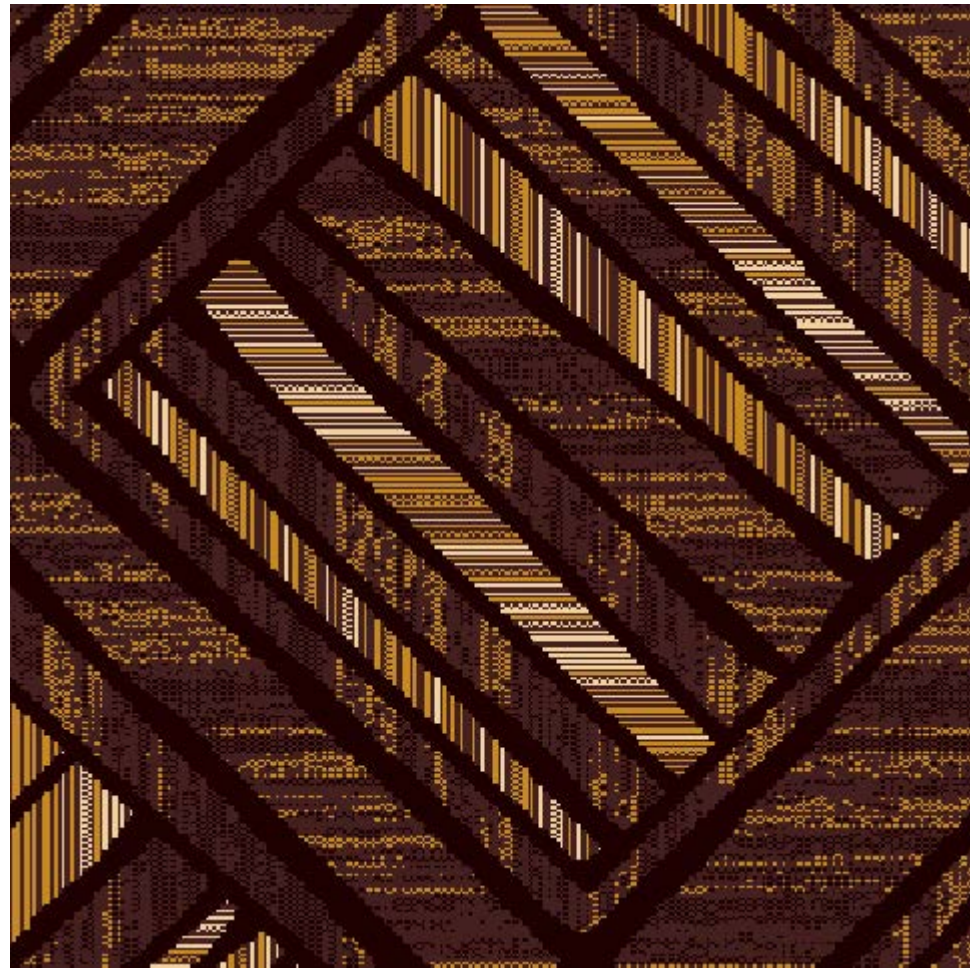
HIGH LIMITS – PRELIMINARY CARPET OPTIONS

©JCY Architecture

July 11, 2012



OPTION 2C



DETAIL

HIGH LIMITS – PRELIMINARY CARPET OPTIONS

©JCI Architecture

July 11, 2012

JCI ARCHITECTURE

DOWNSTREAM
CASINO RESORT

DOWNSTREAM CASINO RESORT EXPANSION - Quapaw, Oklahoma



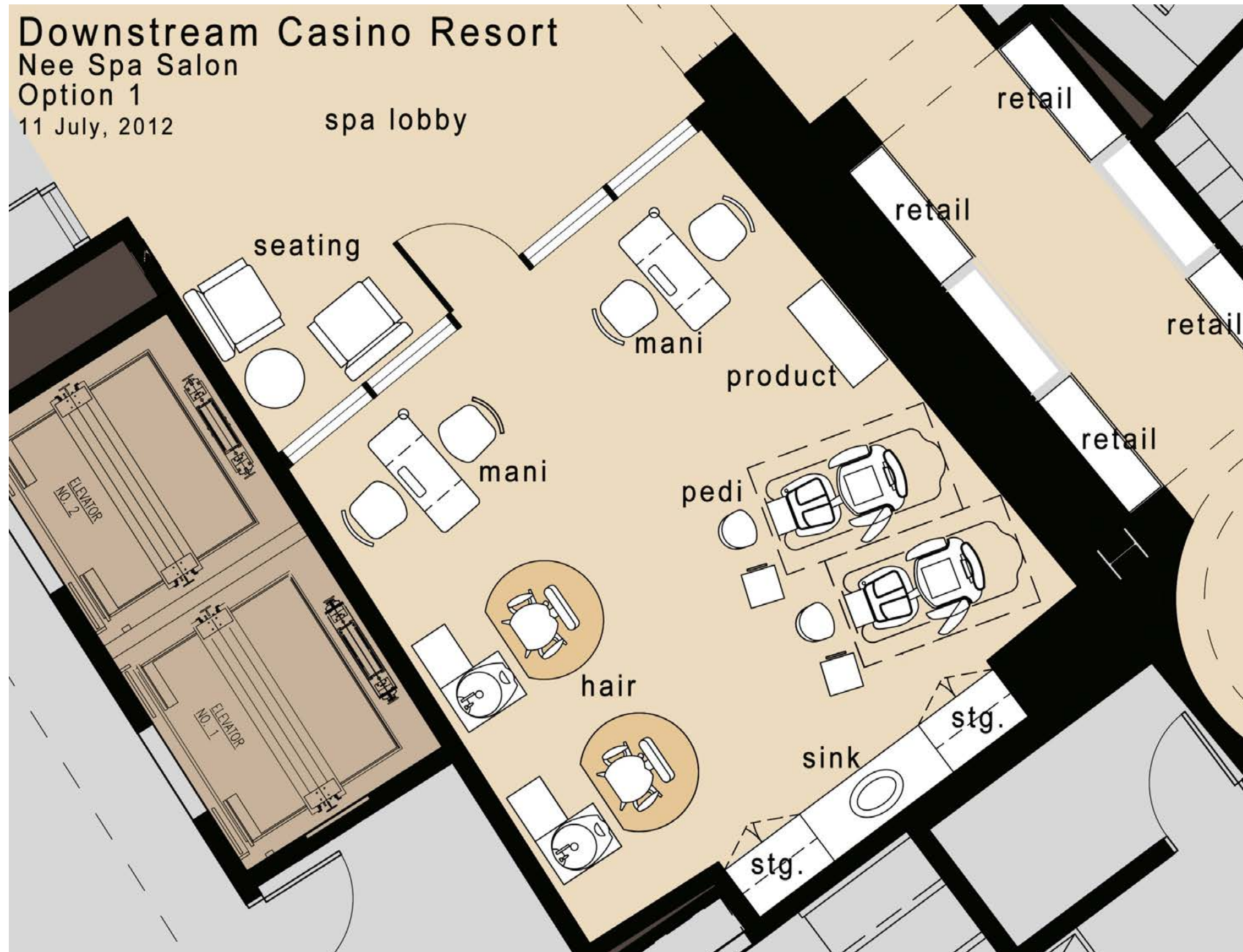
Spa FF&E

Downstream Casino Resort

Nee Spa Salon

Option 1

11 July, 2012

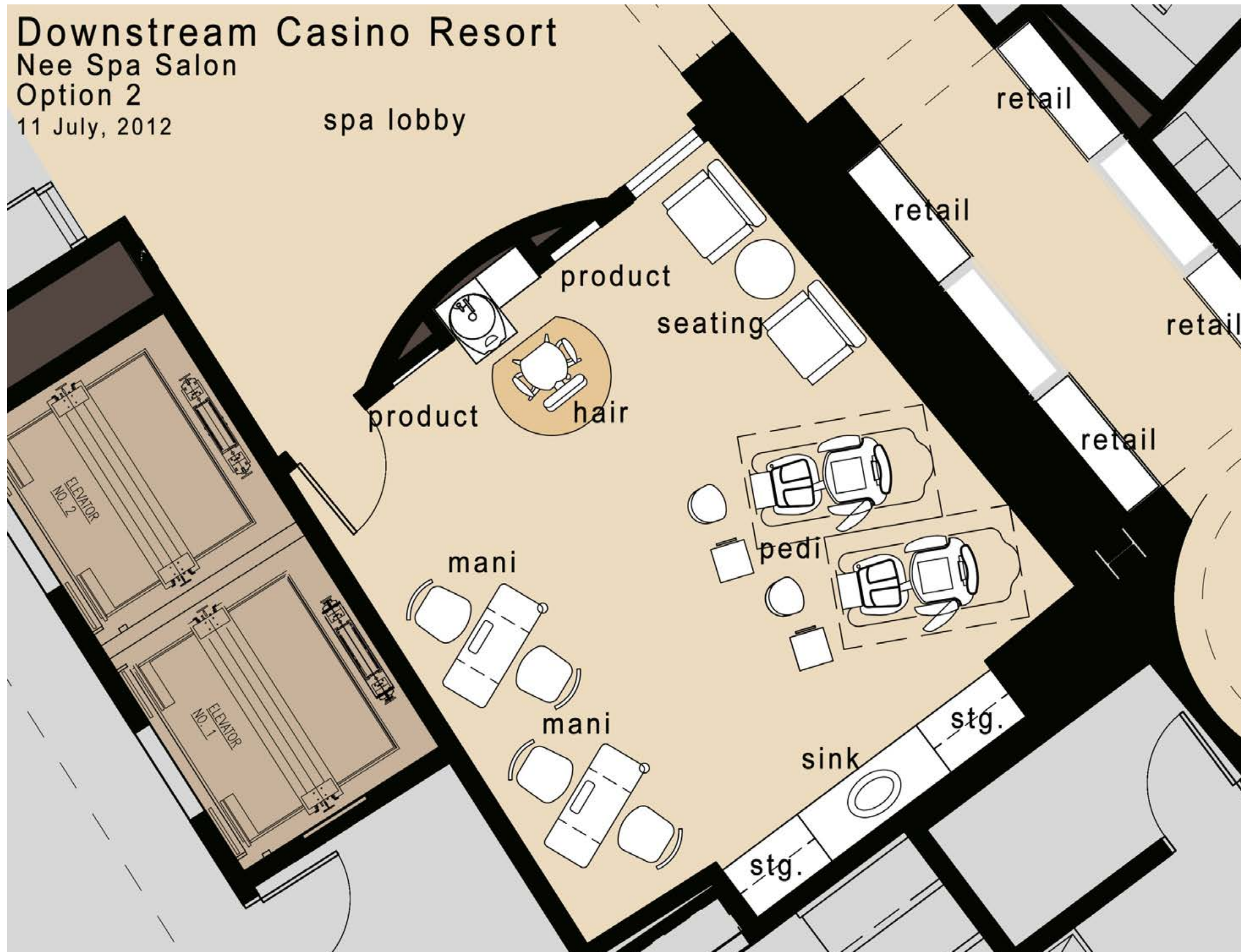


SALON LAYOUT – OPTION 1

©JCI Architecture

July 11, 2012

Downstream Casino Resort
Nee Spa Salon
Option 2
11 July, 2012



SALONG LAYOUT – OPTION 2
©JCI Architecture

(AMY)

Design Update

Prepared for:



Downstream Casino Resort Hotel Expansion

JCJ ARCHITECTURE