

Downstream Authority of the Quapaw Tribe of Oklahoma Regular Meeting  
April 4, 2012

**Meeting Called to Order:** 10 am

<b>ROLL CALL:</b>	John Berrey, Chairman	Present
	Larry Ramsey, Secretary	Absent
	Ranny McWatters, Treasurer	Present
	Marilyn Rogers, Member	Present
	Tamara Smiley, Member	Absent

**DECLARATION OF QUORUM:** announced by  
Construction  
Amy/Jule/Bill/David/Mike/Chris/Ernie/Tim/Steve  
Prayer led by John Berrey

Design Update

- See attached presentation
  - Fitness Center
  - Kid's Klub
  - Spa Lounge Carpet
  - Spa Treatment Drapery
  - Guest Corridor Wall Sconces
  - Terrazzo Inlay Options
- Fitness Center/ Kid's Klub
  - Design boards presented
    - Would rather see painted walls in the kid's room
- Spa lounge carpet
  - Looked at multiple options
  - Waiting on samples for final decision
- Spa Drapery
  - Reed Whitlier – Spyderweb, sand, 1394
- Guest Corridor sconces
  - 3 options presented
  - Consensus of the DDA to go with option 3



○

- Terrazzo Tile Inlay options
  - 4 style options presented
    - Prefer style option 4
  - Reduce the number of inlays to 9-10
  - Suggested inlays
    - Face pots
    - Snake
    - Water turtle
    - Blue heron
    - Crawfish
    - Butterfly
    - Buffalo
    - Scissor tail
    - Humming bird

Manhattan

- Need finalized spa plan asap
  - Need to order steel

Adjourn 10:40am

## Design Update

Prepared for:



## Downstream Casino Resort Hotel Expansion

4 April, 2012

**JCJ** ARCHITECTURE

Boston  
Hartford  
New York  
Phoenix  
San Diego

JCJ.com



# Congratulations



Recipients of the 13<sup>th</sup> Annual  
**Wendell Chino Humanitarian Award**  
presented by:

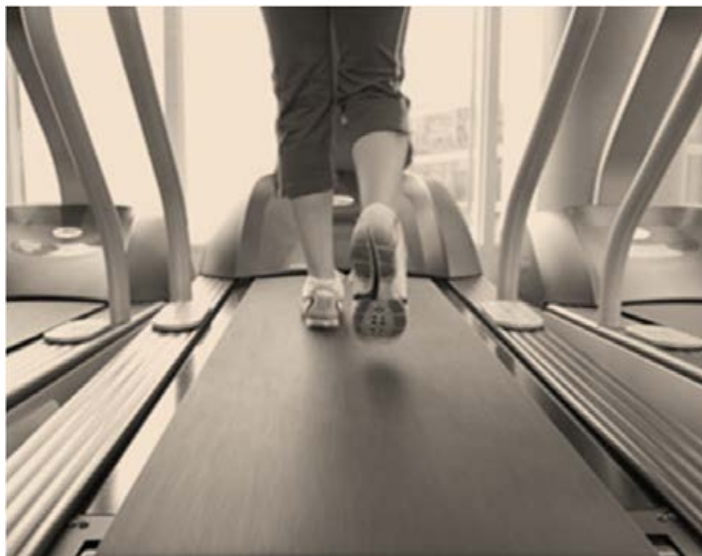


**NATIONAL  
INDIAN  
GAMING  
ASSOCIATION**



# DESIGN AGENDA APRIL 4, 2012

- **FITNESS CENTER MATERIALS & FINISHES**
- **KID'S KLUB MATERIALS & FINISHES**
- **SPA LOUNGE CARPET OPTIONS**
- **SPA TREATMENT ROOM DRAPERY OPTIONS**
- **GUEST CORRIDOR WALL SCONCE OPTIONS**
- **TERRAZZO INLAY OPTIONS – WILDLIFE SELECTION**







**FITNESS CENTER**



**KID'S KLUB**

**ENLARGED TERRAZZO DIAGRAM**

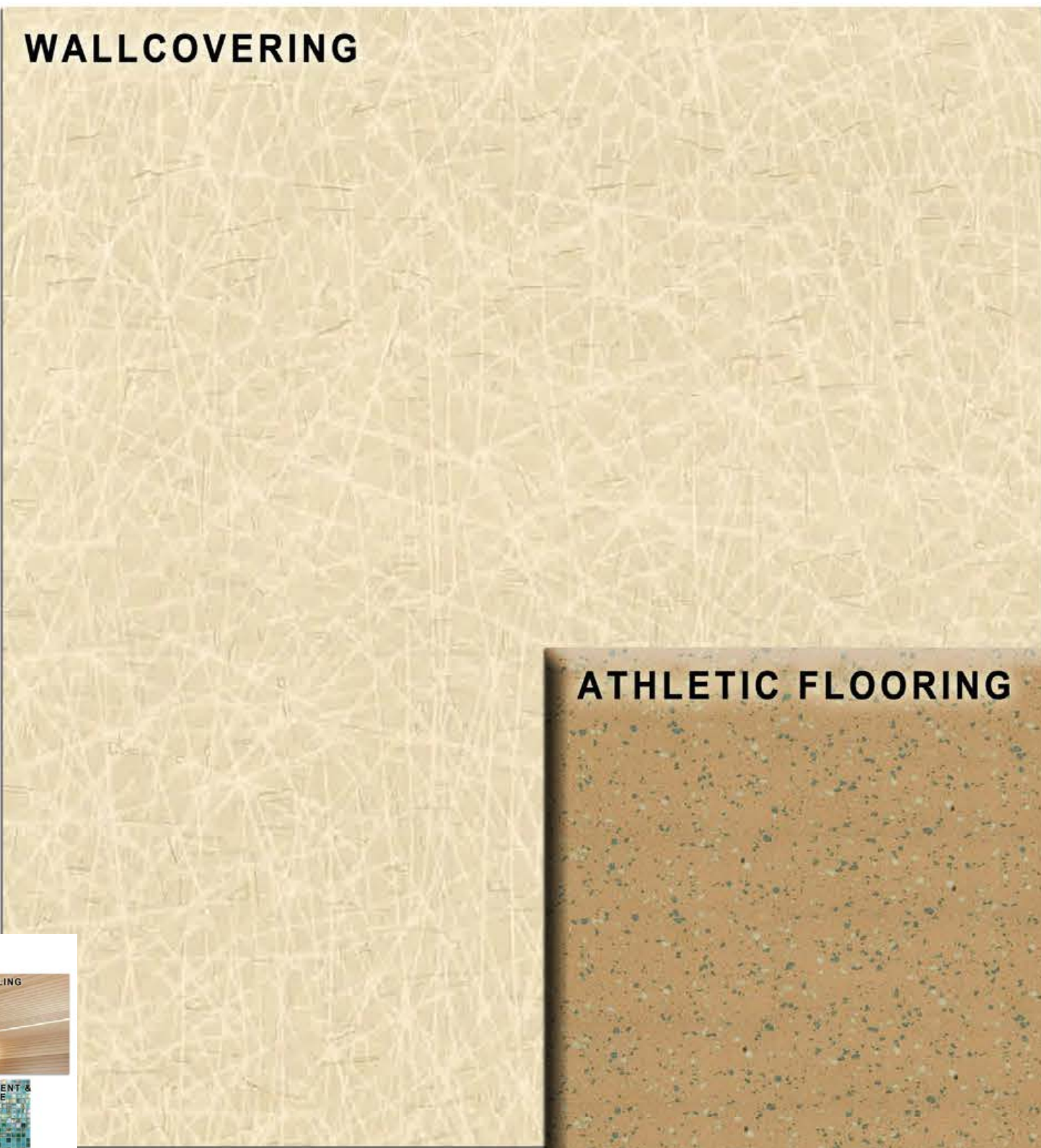
©JCI Architecture

April 4, 2012





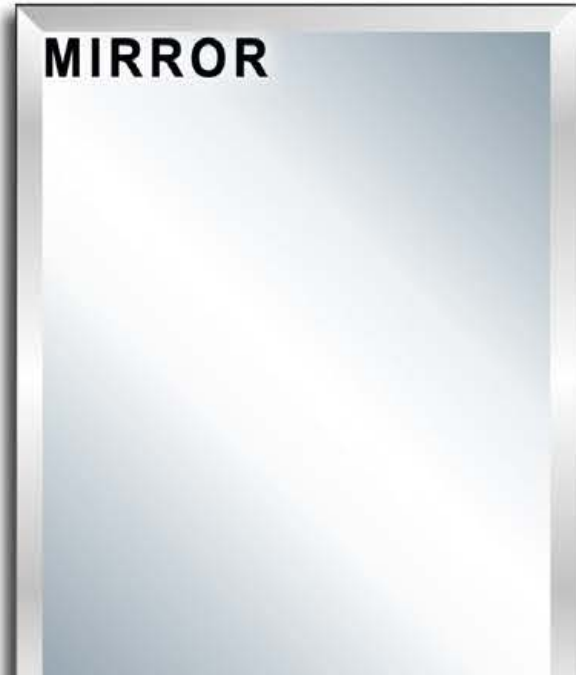
DECORATIVE  
ACRYLIC



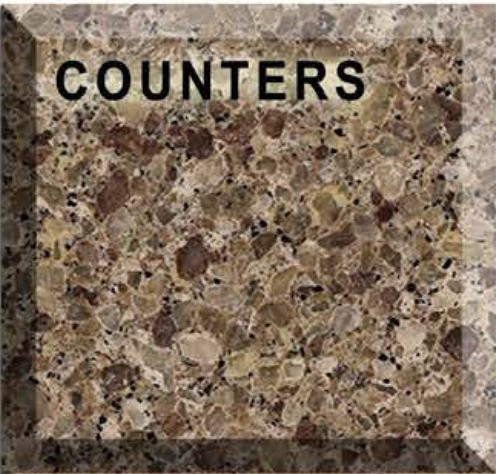
WALLCOVERING



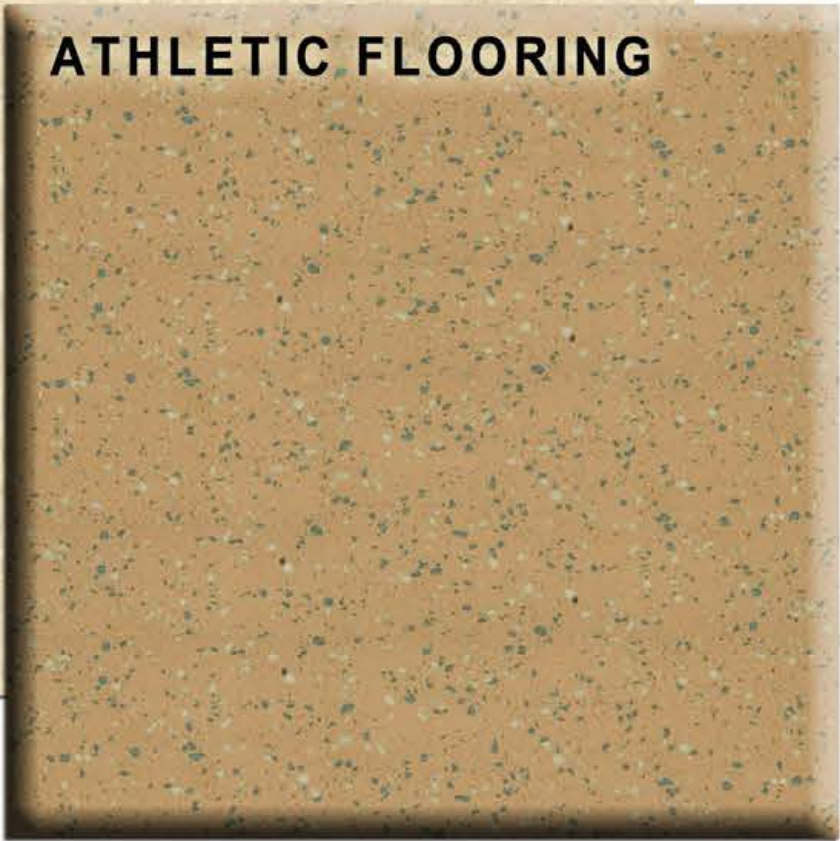
CEILING TILE



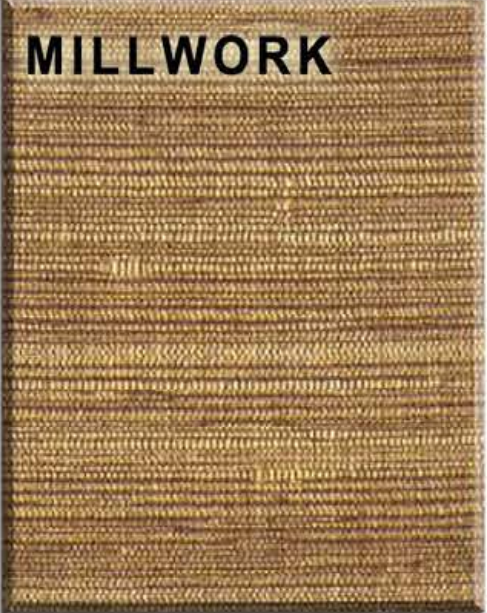
MIRROR



COUNTERS



ATHLETIC FLOORING



MILLWORK



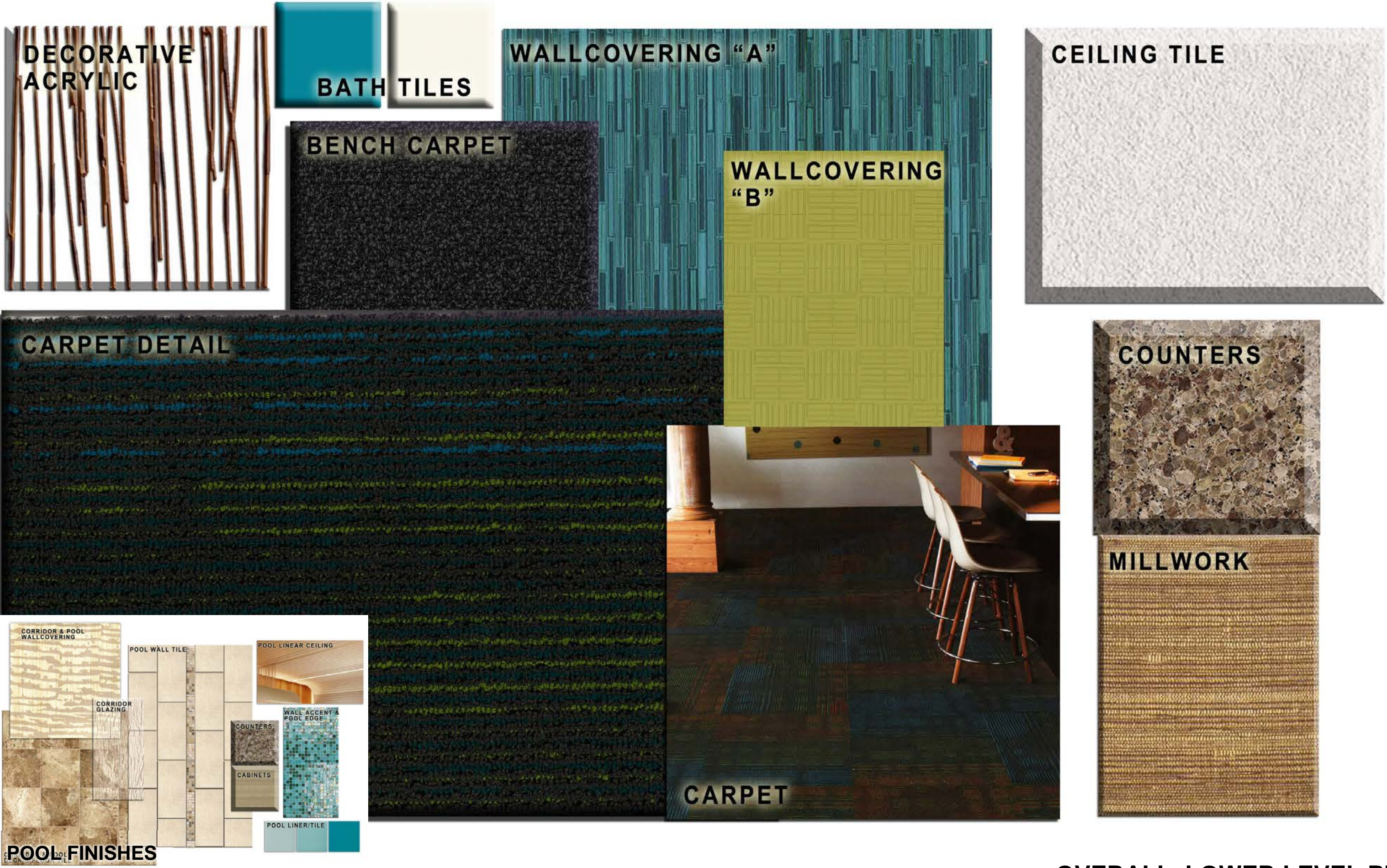
POOL FINISHES

OVERALL LOWER LEVEL PLAN

©JCI Architecture

April 4, 2012

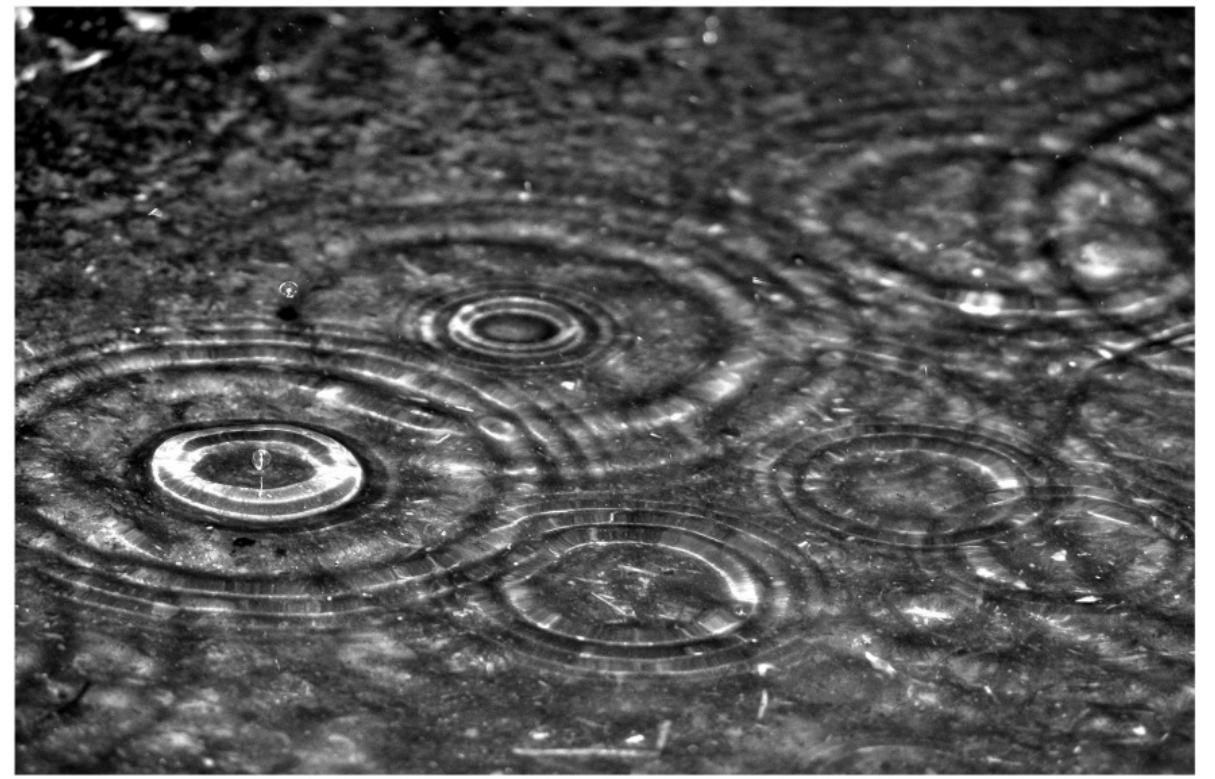




**OVERALL LOWER LEVEL PLAN**  
©JCI Architecture

April 4, 2012



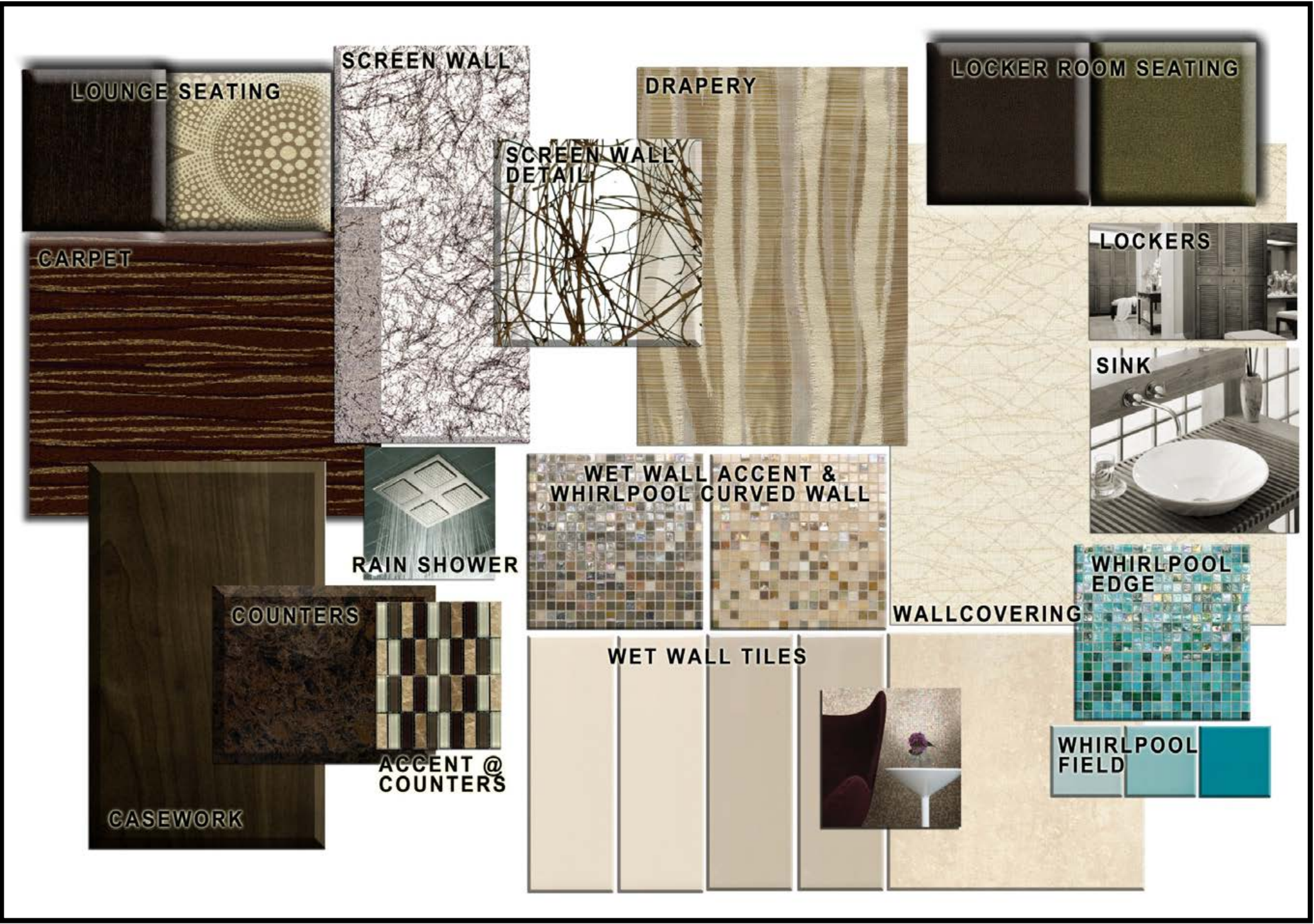


**MENS' & WOMENS' LOCKERS & LOUNGES – “WATER” THEMED CARPET IMAGERY**

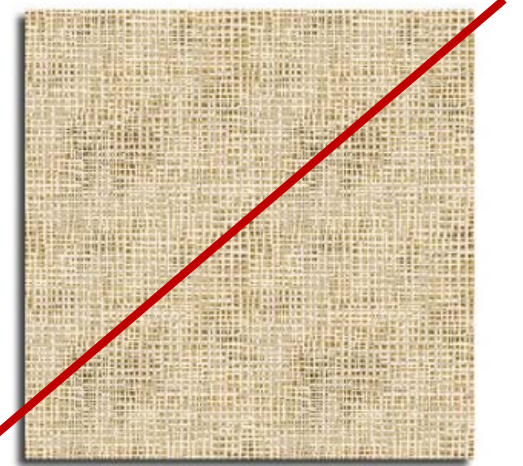
©JCI Architecture

April 4, 2012





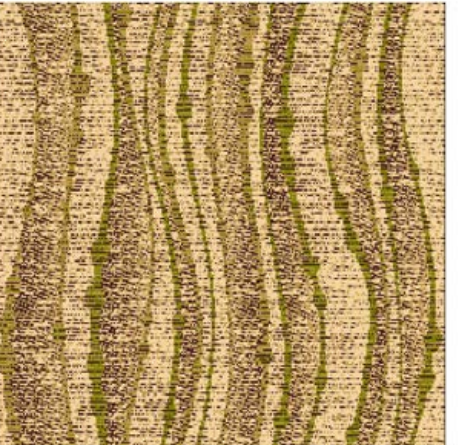
SPA CARPET - OPTION A



SPA CARPET - OPTION E



SPA CARPET - OPTION 2A



SPA CARPET - OPTION 2B



SPA CARPET - OPTION 2C



SPA CARPET - OPTION 2D

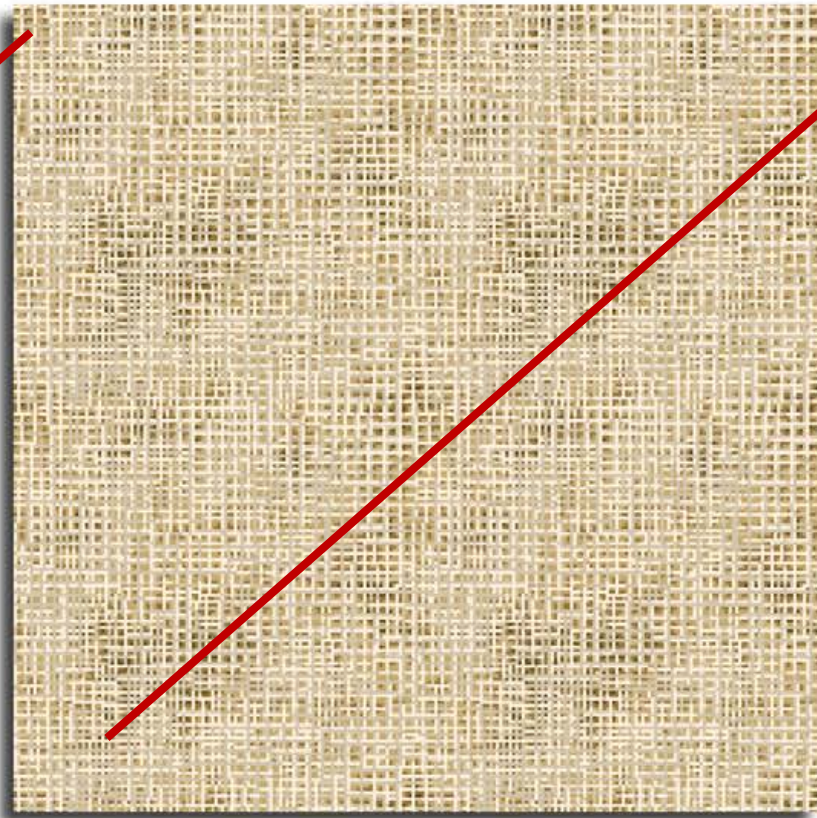
# MENS' & WOMENS' LOCKERS & LOUNGES – “WATER” THEMED CARPET CONCEPTS

April 4, 2012





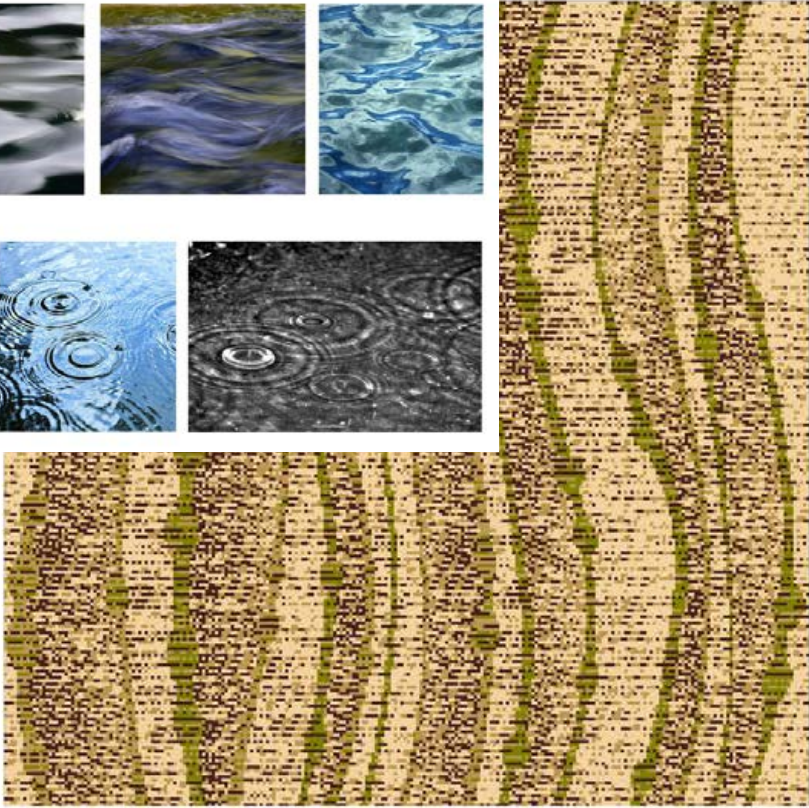
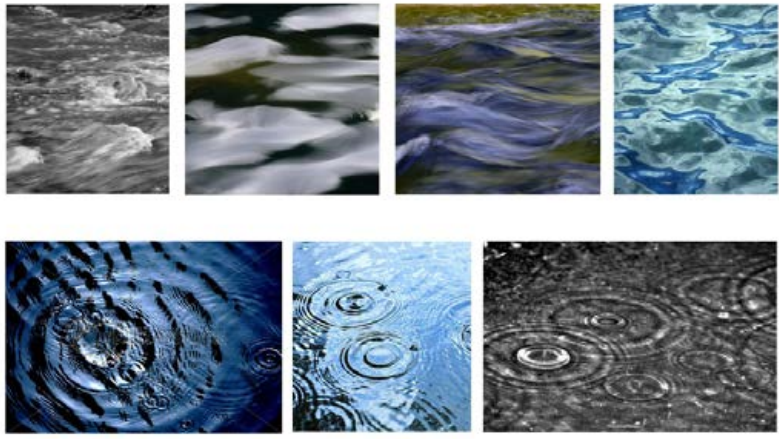
**SPA CARPET - OPTION A**



**SPA CARPET - OPTION E**



**SPA CARPET - OPTION 2A**



**SPA CARPET - OPTION 2B**



**SPA CARPET - OPTION 2C**



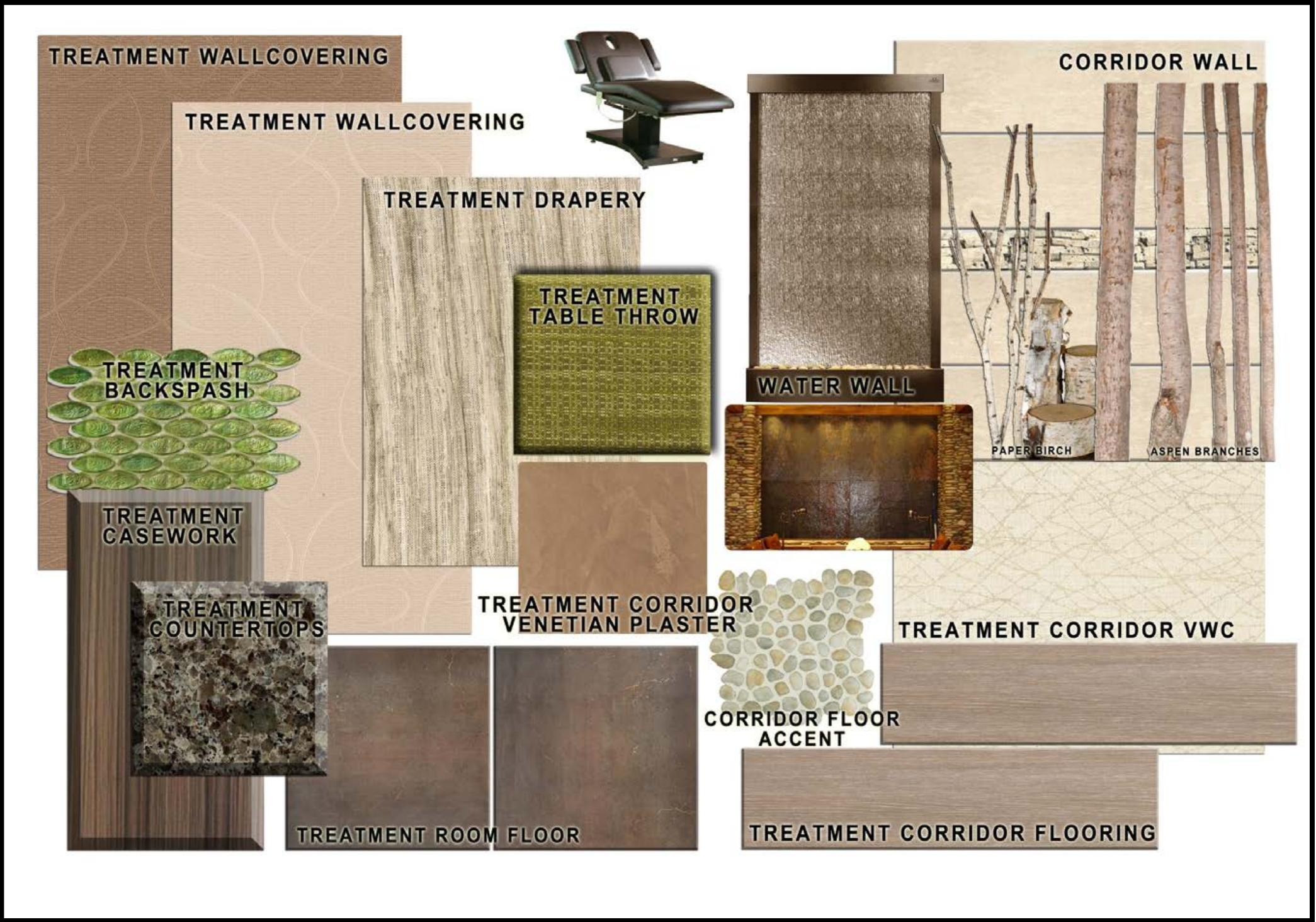
**SPA CARPET - OPTION 2D**

**MENS' & WOMENS' LOCKERS & LOUNGES – “WATER” THEMED CARPET CONCEPTS**

©JCI Architecture

April 4, 2012



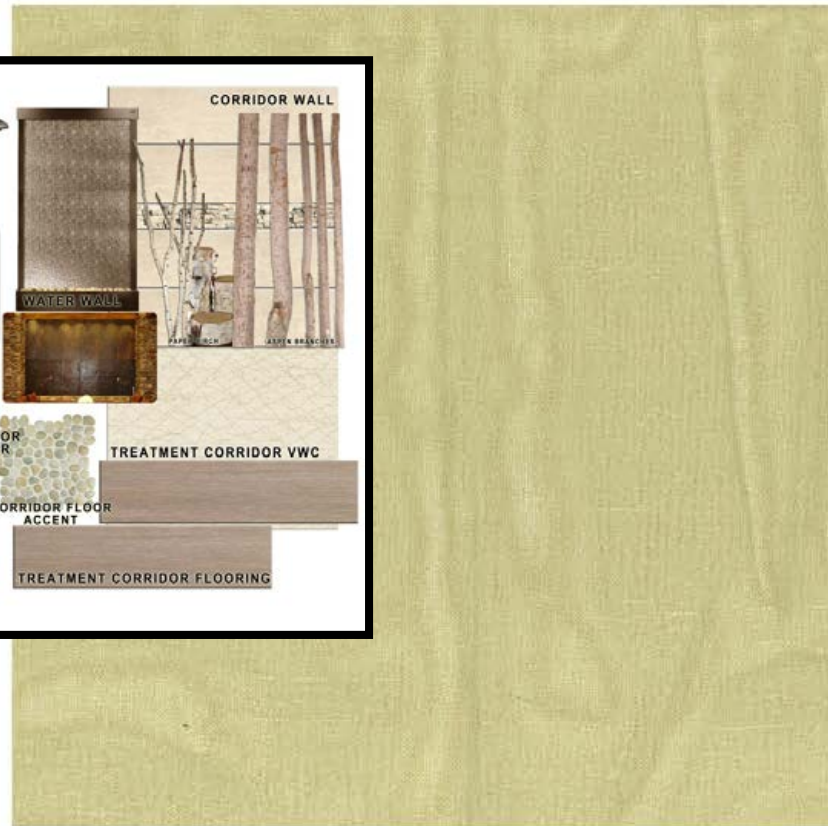


# TREATMENT CORRIDOR & ROOMS – DRAPERY & SHEER OPTIONS

©JCI Architecture

April 4, 2012





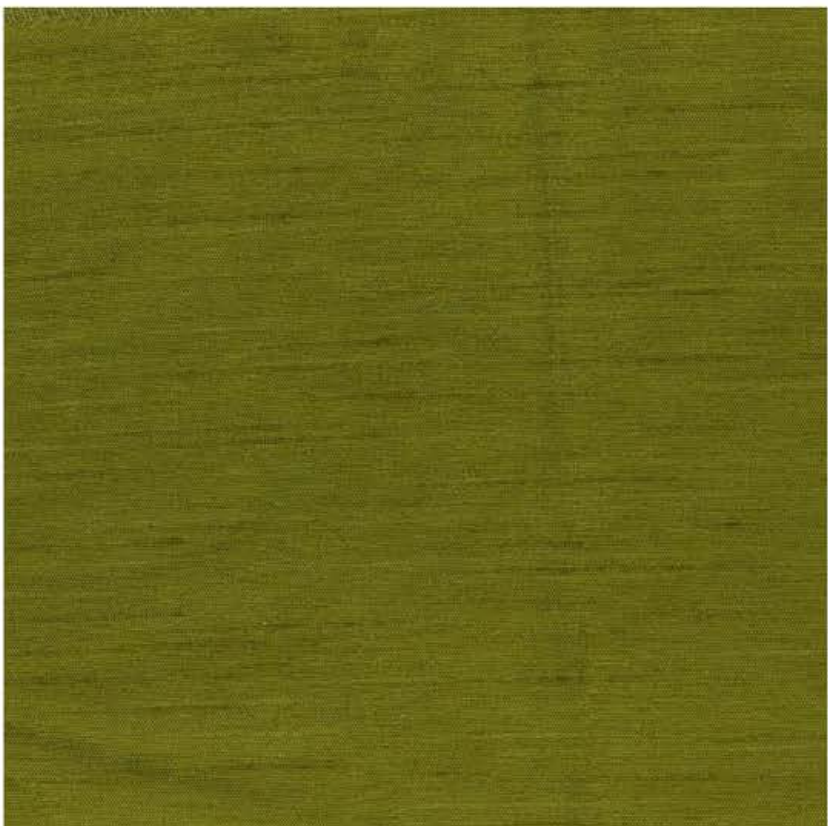
**OPTION "A" - callas moss**



**OPTION "B" - foundation olive**



**OPTION "C" - requisite willow**



**OPTION "D" - exquisite avocado**



**OPTION "E" - exquisite willow**



**OPTION "F" - eqcuisite tundra**

## TREATMENT CORRIDOR & ROOMS – DRAPERY & SHEER OPTIONS 1 of 2

©JCI Architecture

April 4, 2012

**JCI** ARCHITECTURE

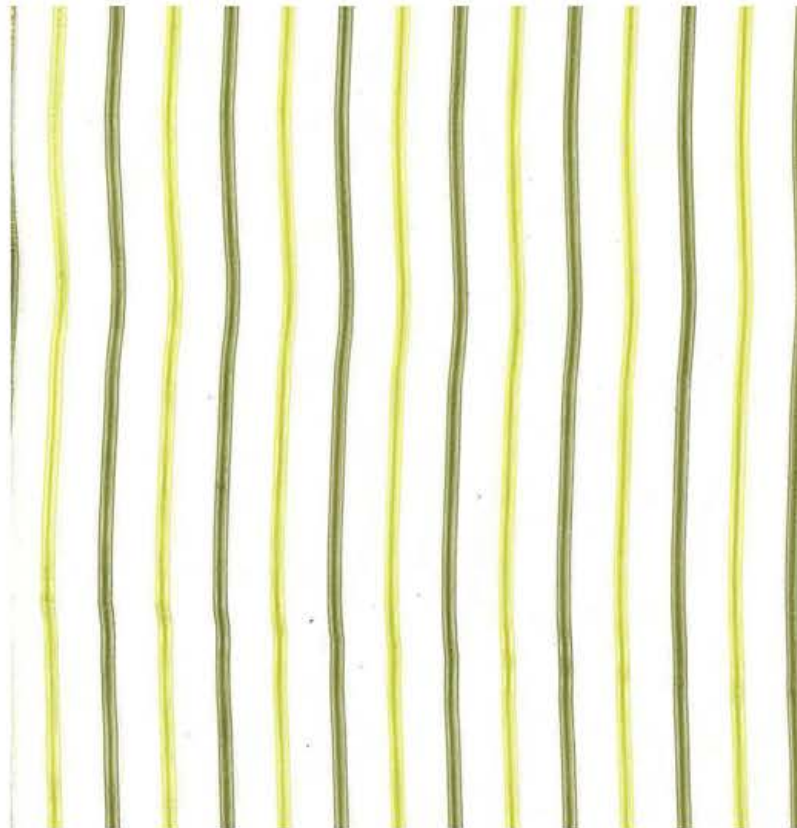
**DOWNSTREAM**  
CASINO RESORT

DOWNSTREAM CASINO RESORT EXPANSION - Quapaw, Oklahoma

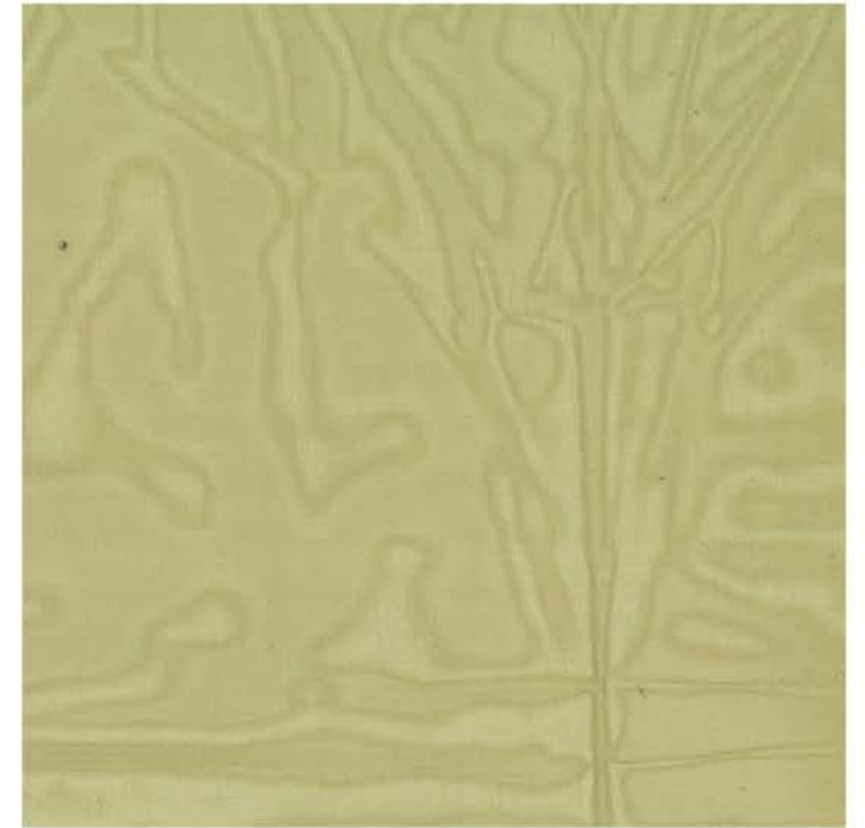




**OPTION "G" - magicwand pistachio**



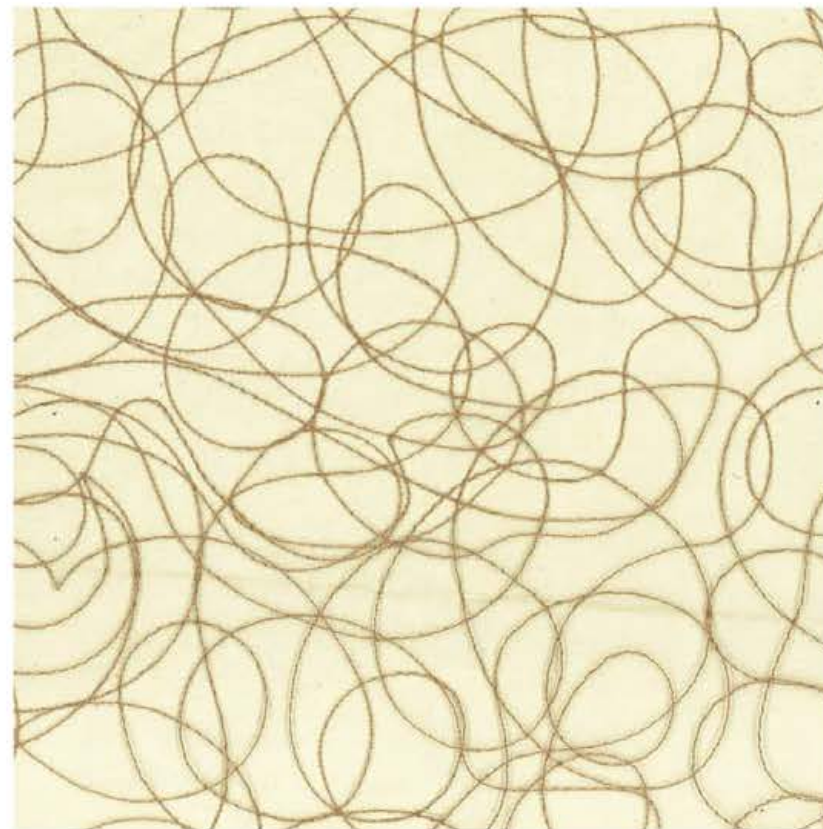
**OPTION "H" - dorato asparagus**



**OPTION "I" - elementary pesto**



**OPTION "J" - grove orchid**



**OPTION "K" - hangover**



**OPTION "L" - exquisite tundra**

## TREATMENT CORRIDOR & ROOMS – DRAPERY & SHEER OPTIONS 2 of 2

©JCI Architecture

April 4, 2012

**JCI** ARCHITECTURE

**DOWNSTREAM**  
CASINO RESORT

DOWNSTREAM CASINO RESORT EXPANSION - Quapaw, Oklahoma





OPTION 1



OPTION 2



OPTION 3



Style Option 1 – Metal figure inlay (probably most cost-effective):



Style Option 2 – Metal figure inlay with contrasting terrazzo colors (mid-range):



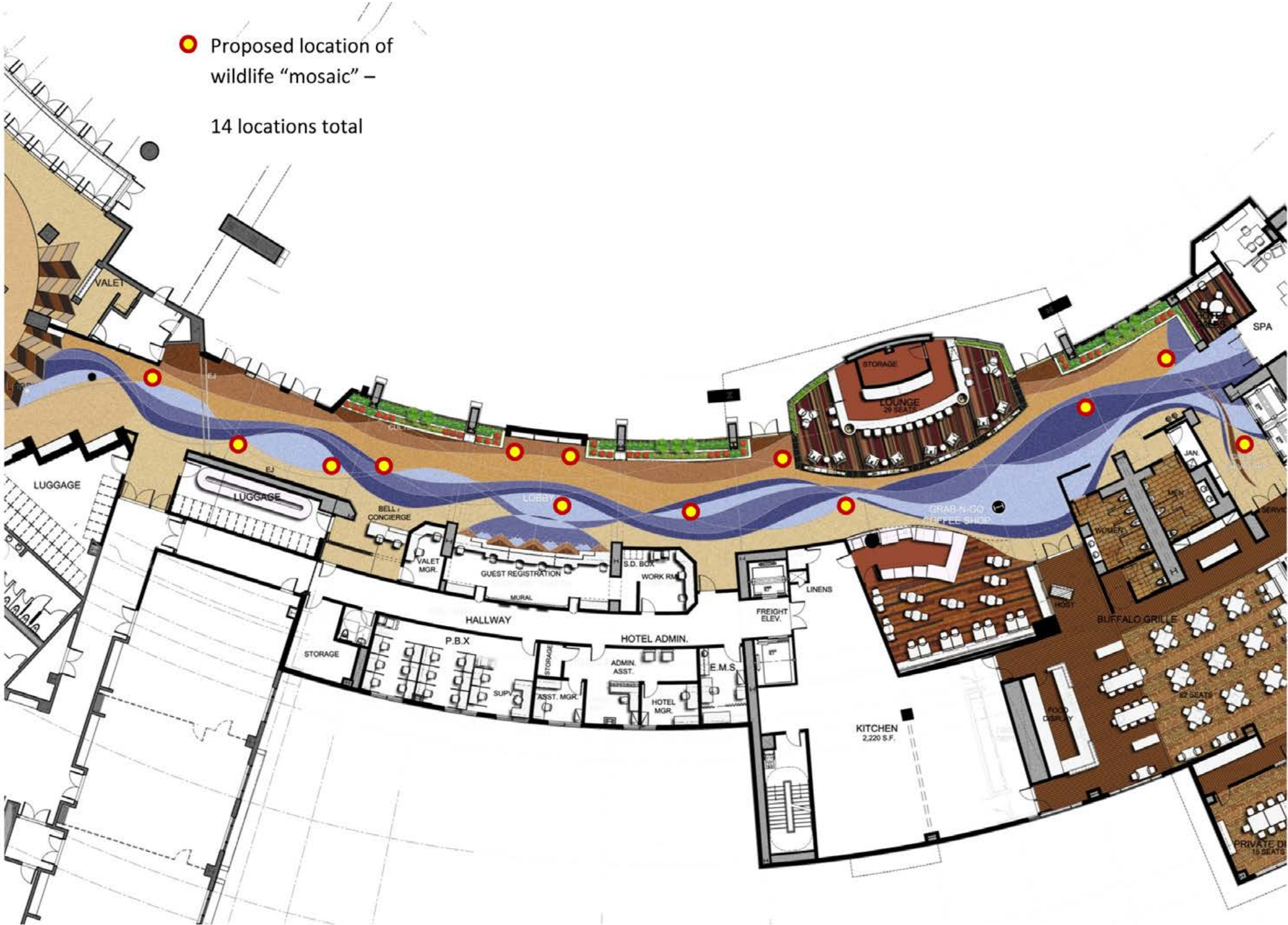
Style Option 3 – combo metal inlay and terrazzo “mosaic” (upper mid-range):



Style Option 4 – stone mosaic inlay in terrazzo (probably most expensive):



● Proposed location of wildlife “mosaic” –  
14 locations total



**TERRAZZO WILDLIFE MOTIF INLAY OPTIONS**  
© JCY Architecture

April 4, 2012



Style Option 1 – Metal figure inlay (probably most cost-effective):



Style Option 2 – Metal figure inlay with contrasting terrazzo colors (mid-range price):



Style Option 3 – combo metal inlay and terrazzo “mosaic” (upper mid-range cost):



Style Option 4 – stone mosaic inlay in terrazzo (probably most expensive):



Big eyed Chub



Cardinal Shiner



Crawfish (Orconectes Neglectus)



©2004 Bill Tracy

Eastern Box Turtle



Large Mouth Bass



Orange Throated Darter



Frog



Skink



Small mouth Bass



Beaver



Pineville Swallowtail Butterfly



Pineville Swallowtail Butterfly



Eastern Pondhawk Dragonfly



Ruby Throated Hummingbird



Bald Eagle



American Kestrel



Brown Thrasher



Green Heron

TERRAZZO WILDLIFE MOTIF INLAY OPTIONS

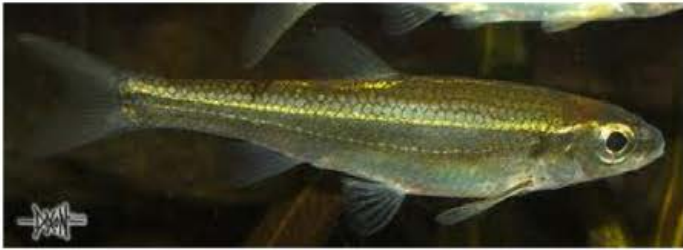
©JCI Architecture

April 4, 2012





Big eyed Chub



Cardinal Shiner



Crawfish (Orconectes Neglectus)



©2004 Bill Tracy

Eastern Box Turtle



Large Mouth Bass



Orange Throated Darter



Frog



Skink



Small mouth Bass



Beaver



Pineville Swallowtail Butterfly



Pineville Swallowtail Butterfly

**TERRAZZO WILDLIFE MOTIF INLAY OPTIONS**

©JCY Architecture

April 4, 2012





Eastern Pondhawk Dragonfly



Ruby Throated Hummingbird



Bald Eagle



American Kestrel



Brown Thrasher



Green Heron

## TERRAZZO WILDLIFE MOTIF INLAY OPTIONS

©JCI Architecture

April 4, 2012



## Design Update

Prepared for:



## Downstream Casino Resort Hotel Expansion

**JCJ** ARCHITECTURE

Boston  
Hartford  
New York  
Phoenix  
San Diego

JCJ.com